

# EV48100-T (48V100Ah)

lithium iron phosphate (LiFePO4) battery

**Your best power choice for  
Telecom energy storage system!**



\*the LCD display is optional

EverExceed LiFePO4 solutions are more advanced, highly efficient and has many advantages over the traditional Lead Acid technology.

Here introducing popular EV48100-T battery of EverExceed which is high demanding among telecom industry users for its most advanced features:

## Specifications

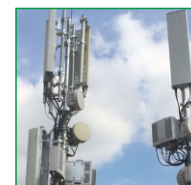
| Nominal Characteristics         |                               |
|---------------------------------|-------------------------------|
| Battery Model                   | EV48100-T                     |
| Nominal Voltage                 | 48 V                          |
| Nominal Capacity                | 100 Ah                        |
| Nominal Energy                  | 4800 Wh                       |
| Electrical Characteristics      |                               |
| Recommended Charging Voltage    | 54-54.7 V                     |
| Floating Charging Voltage       | 51.5-52 V                     |
| Recommended Charging Current    | 50 A                          |
| Maximum Discharging Current     | 100 A                         |
| Discharging Cut-off Voltage     | 40.5 V                        |
| Working Voltage Range           | 40.5-54.7 V                   |
| Operating Conditions            |                               |
| Cycle Life                      | ≥3000 Cycles@100%<br>DOD@25°C |
| Roundtrip Efficiency            | ≥98%                          |
| Operating Charge Temperature    | 0°C to +50°C                  |
| Operating Discharge Temperature | -20°C to +60°C                |
| Storage Temperature             | -20°C to +60°C                |
| Mechanical Characteristics      |                               |
| Length x Width x Height         | 483 x 480 x 177 mm            |
| Weight                          | 45 Kg                         |
| Terminal                        | M6                            |
| Optional Function               |                               |
| Remote monitoring               | SNMP                          |
| Anti-theft                      | GPS and Gyroscope             |

## Application

- Base transceiver station
- Communication equipments
- Central office
- Telecommunication system
- Microprocessor based office machine
- UPS

## Advantage summary

- 15+ years of design life, 19" rack mounting module design;
- Direct Lead Acid Battery (AGM/GEL) replacement for 48V 100Ah;
- Faster charge, 1 hour of charging can provide up to 90% charge;
- High energy density and conversion efficiency;
- Excellent high and low temperature operation;
- High cycle times and longer service life of >3000 cycles @100% DOD;
- Can support paralleling use for increased requirement;
- Safety in use: Intelligent, user friendly BMS inside, No explosion, No fire;
- Intelligent automatic protection for overcharge, over discharge and temperature conditions;
- Ultra low self discharge rate <1.5%/month;
- No maintenance required through out the lifetime;
- Great power saver;
- Superior DOD (100%) over lead acid batteries;
- RS485 and RS232 communication output;
- BMS with internal cell balancing function to ensure long service life;
- Excellent high temperature performance, ultra low life decay rate in operating when harsh environment;



## Performance curve

